

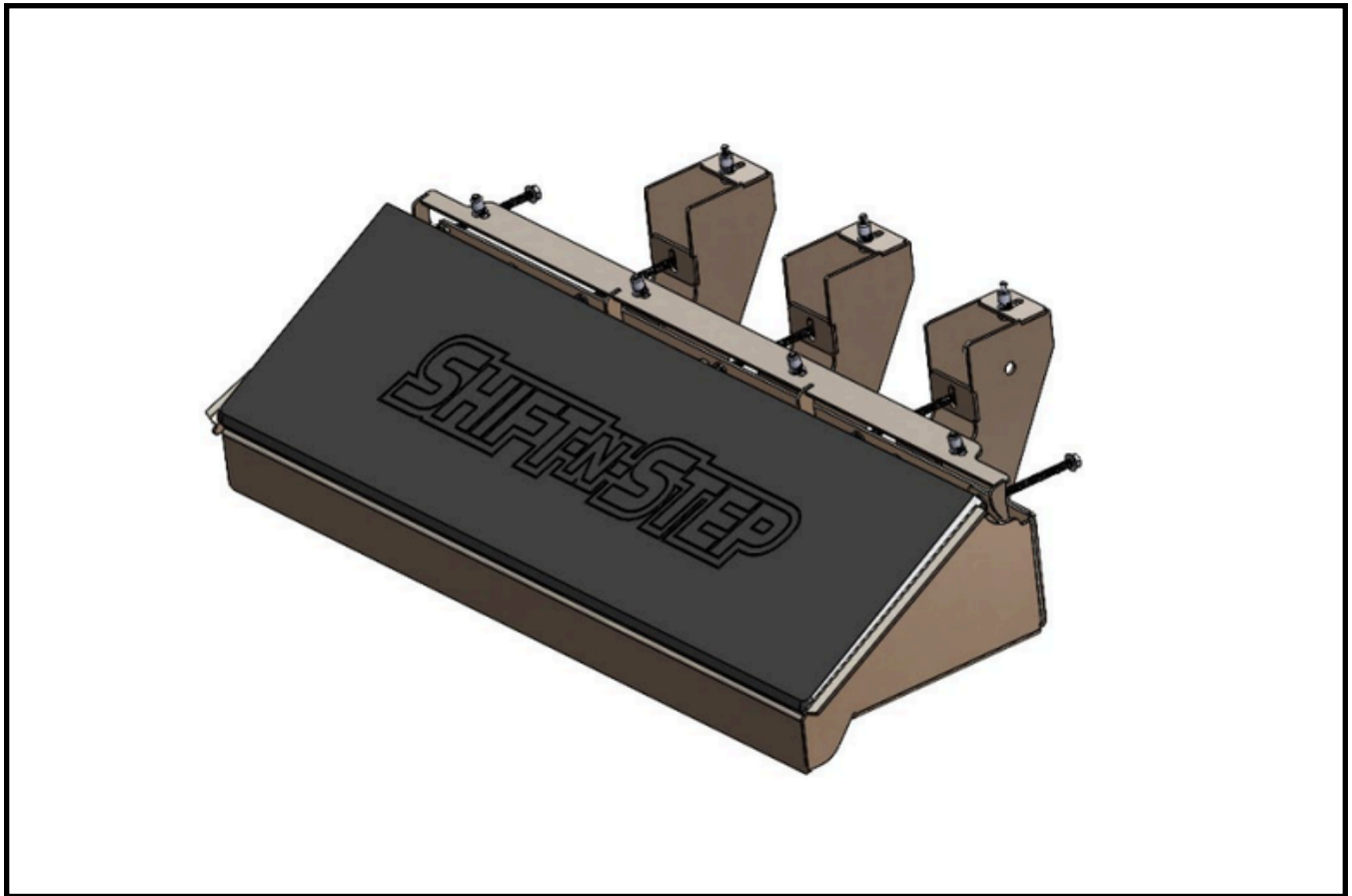
# FENTON

InnovateElevate

## FORD TRANSIT

**Bus Step with Shift-N-Step and  
Bus Step Cover Installation**

TBSA0010SS

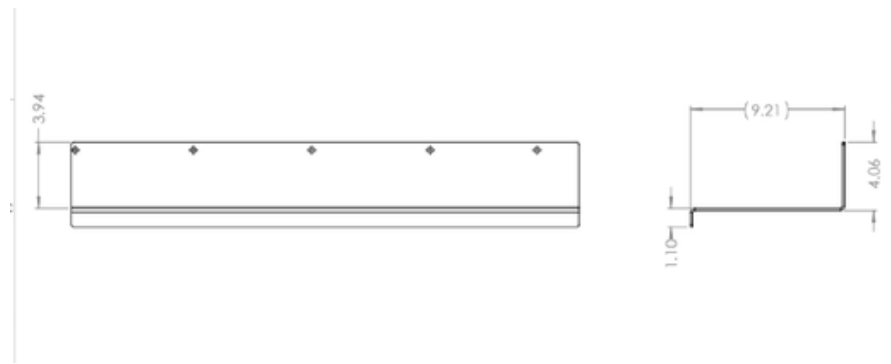
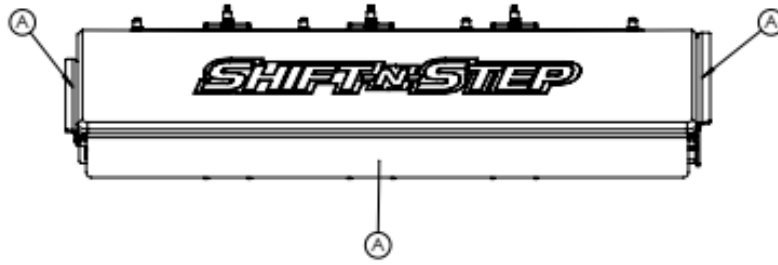
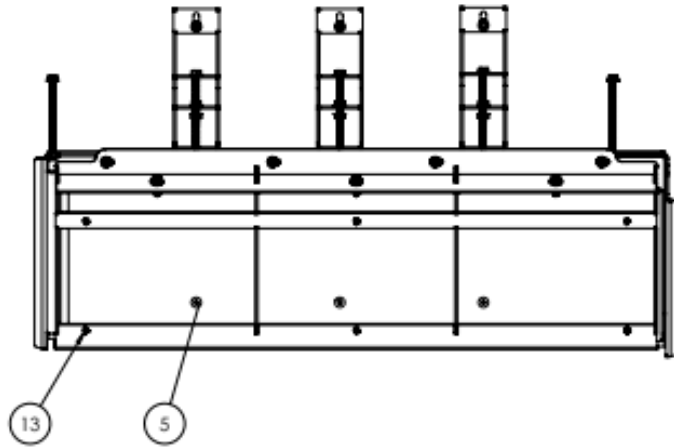


### INCLUDED IN THIS KIT:

- (2) Bus Step Rear Bracket (TBSWB010)
- (1) Front Bracket Weldment (TBSWB110)
- (1) Transit Bus Step Tread Weldment (TBSWT010)
- (6) Button Head Screw, 1/4"-20 x 3/4", SS (BH2520075S)
- (17) Serrated 1/4"-20 Flange Nut (FN2520SRZN)
- (5) Button Head SCS 1/4"-20 x 4" SS (BH2520400S)
- (12) S/S Flat Washer 1/4" x 5/8" O.D (FW6250062S)
- (7) Rivet Nut 1/4"-20 x .580" (RNRF252058)
- (6) Hex Flange Bolt, 1/4"-20 x 1 (HF25201008)
- (1) Lid Seal Plate Weldment (TBSWL010)
- (7) 1/4" Lock Washer, SS (LW025000SS)
- (7) Button Head SCS 1/4"-20 x 1" (BH2520100S)
- (6) Sheet Metal Screw Pan Head #8 x .5" Z (SMSPH8050Z)
- (1) Transit Poly Cover Shift-N-Step (TBSPL100)
- (2) Weather Strip 8.5" (TBSA0010BS8)
- (1) Weather Strip 30" (TBSA0010BS30)

### NEEDED FOR INSTALLATION:

- Drill
  - 5/16" bit
  - 25/64" (0.3906") bit
  - 3/32" (0.0938") bit
  - 5/16" bit
  - 1/4" bit
  - 1/8" bit
- Rust Protectant Spray/Primer
- (2) Rag
- Impact Driver
  - 7/16" Hex Bit and wrench
  - 5/32" Hex Bit
- Marker
- Air Compressor/Manual Rivet Gun
- 1" Painter's tape
- 2" Painter's tape
- Measuring tape
- Square
- Duct Tape
- Black Caulk
- Rubber Gloves



### 1.

Remove plastic lower trim piece from van body.

### 2.

Drill pilot/relief hole for 4" Button head screw with 13/64" (0.2031") bit through preexisting holes into metal sheet behind.



### 3.

Spray rust protectant spray/primer on each hole.

### 4.

Loosely attach 3/4" button headed screws and flange nuts (6) to step.

**NOTE:**

A) Front bracket towards front of van has indicator hole.



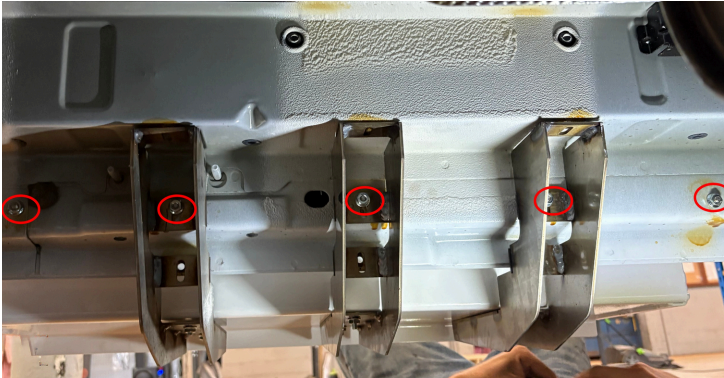
### 5.

Align holes across top of back of tread weldment with holes drilled in vehicle.



### 6.

Insert 4" button head screws (5) into flat washers (5), into holes on tread weldment, and through edge of vehicle to loosely install/hang bus step in mounting position.



**7.**

Hand tighten flange nuts (5) on button head screws underneath vehicle.

**8.**

Mark rest of slots in brackets on underside of vehicle with marker and remove brackets and step.



**9.**

Predrill with 1/8" bit on every mark then drill in top row mark with 25/64" (0.3906") bit and in bottom row mark with 5/16" bit to make relief holes for rivet nuts and bolts.



### 10.

Spray rust protectant/primer on each hole.

### 11.

Insert and secure rivet nuts into top set of three holes with rivet gun.



### 12.

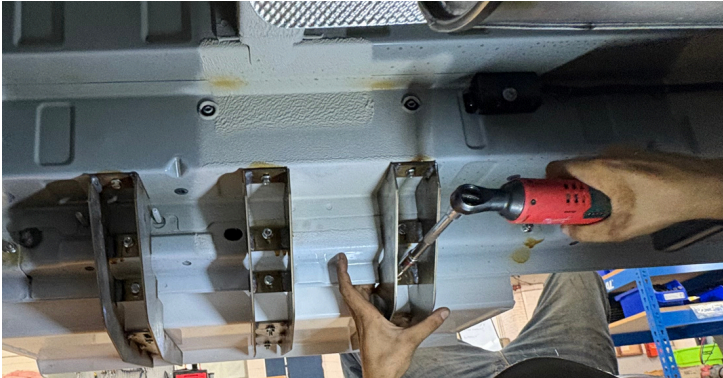
Reattach tread weldment and brackets.

**NOTE:**

**A)** Insert hex flange bolts (6) into holes through mounting bracket slots (3 on top row, 3 on bottom row), hand tighten bottom row of bolts with flange nuts (3).

**B)** Tighten flange nuts (3) and flange bolts (6) with 7/16" hex bit on impact driver.





### 13.

Continue reattaching tread weldment.

**NOTE:**

**A)** Tighten 4" button head screw (5) along top of back panel of tread weldment with 5/32" hex bit on impact driver.

**B)** Remove 3/4" button head screws (6) from bottom panel of tread weldment with 5/32" hex bit on impact driver.

### 14.

Wipe down tread weldment with clean rag.



### 15.

Temporarily place a strip of tape about 3/4" from front edge of bottom panel on tread weldment for sticker alignment.



### 16.

Locate center of tread weldment.

**NOTE:**

A) Mark should be around 15".

### 17.

Place a strip of tape across front edge of "Shift-N-Step Watch Your Step" traction sticker.



### 18.

Measure traction sticker, mark middle on tape with marker.

**NOTE:**

A) Mark should be around 14.5".



### 19.

Peel and stick traction sticker, matching the middle marks to each other.

### 20.

Remove tap, mark button head screw holes with 5/32" hex bit.

**NOTE:**

A) Use a punch/Phillips head screwdriver to poke up through to locate holes in sticker.



### 21.

Replace button head screws and flange nut, tighten with 5/32" hex bit on impact driver.

**NOTE:**

A) Be sure not to damage sticker when tightening so have hex and wrench at both sides.

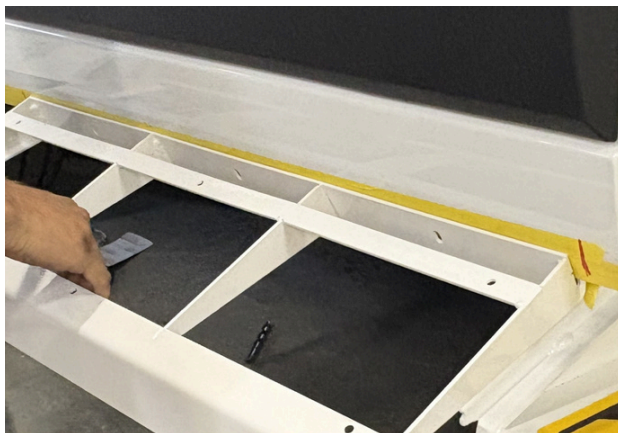


### 22.

Stick three rows of 2" painters tape to bottom edge of cargo door.

### 23.

Close door, mark edge of inside tread weldment with square tool to measure location of lid.



### 24.

Open door, match lid seal plate weldment edges to marker lines with about 1/2" between marked lines, slide on to bottom edge of door.



### 25.

Mark on tape screws holes (3) on inside lid seal weldment on under side of door.

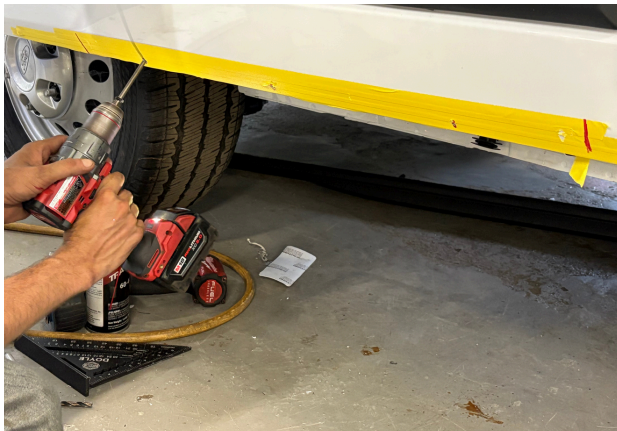
### 26.

Mark on bottom edge of door screw holes (4).



### 27.

Remove lid seal weldment, predrill with 1/8" bit, then drill with 1/4" on each mark on tape.



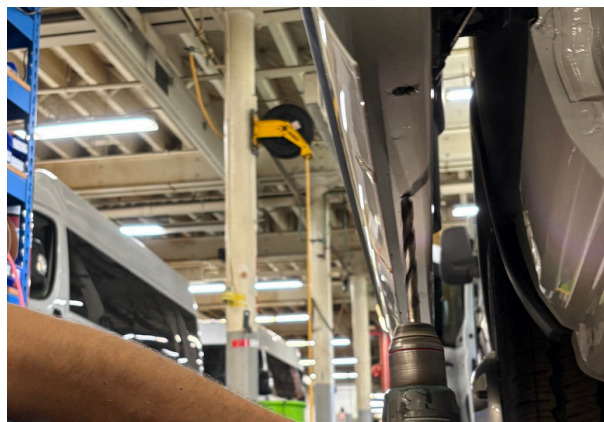


### 28.

Remove tape, spray rust protectant/primer on each hole, wiping away excess with rag.

### 29.

On marks on underside of door, drill each with 25/64" (0.3906") bit for nut inserts.



### 30.

Spray rust protectant/primer on each hole, wipe away excess with rag.



### 31.

Insert and secure rivet nuts (4) into holes on underside of cargo door with rivet gun.

### 32.

Insert 1" button head screws into lock washers, then flat washers.



### 33.

Position lid seal weldment, insert 1" button head screws from inside, and loosely hand tighten flange nuts onto end of screws from outside door.

**NOTE:**

**A)** If button head is not inserted from inside of door facing out (as shown) damage will occur.



### 34.

Insert button head screws, with washers, into screw holes and rivet nuts on bottom edge of door.

### 35.

Tighten all (7) with 5/32" hex bit.



### 36.

Slowly close door, match edge of Transit Poly Cover with edge of lid seal weldment.

**NOTE:**

**A)** Make sure there is no contact or paint damage.

**B)** May have to adjust outer lid to be out of the way.



### 37.

Use duct tape to secure poly cover to side of cargo door.

**NOTE:**

**A)** Door cover should be inline with lower weldment on both sides of step.

### 38.

Open door, going through hole on lid seal weldment screw holes, drill relief holes (6) with 1/8" bit.

**NOTE:**

**A)** Do not go all the way through cover.



### 39.

Insert and tighten pan head screws with Phillips head screw driver, peel off duct tape.



### 40.

Peel back off 8.5" weather strips and stick onto rear inside lip of tread weldment and front side of lid seal weldment.

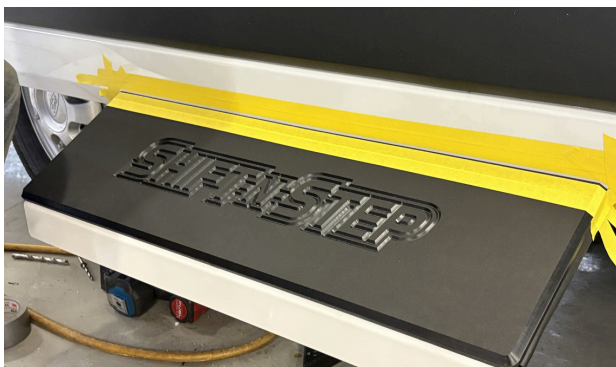
### 41.

Peel backing off 30" weather strip and stick onto inner back edge of lid seal weldment.



### 42.

Tape off bottom of cargo door and upper edge of poly cover.





### 43.

Use black caulk along tape seam, following with a gloved finger to smooth out and remove tape.

# FENTON

InnovateElevate

## Have Questions?

—

Our team is ready to help!

info@fentonmobility.com • 716-484-7016



Terms & Conditions

<https://www.fentonmobility.com/terms-conditions/>