

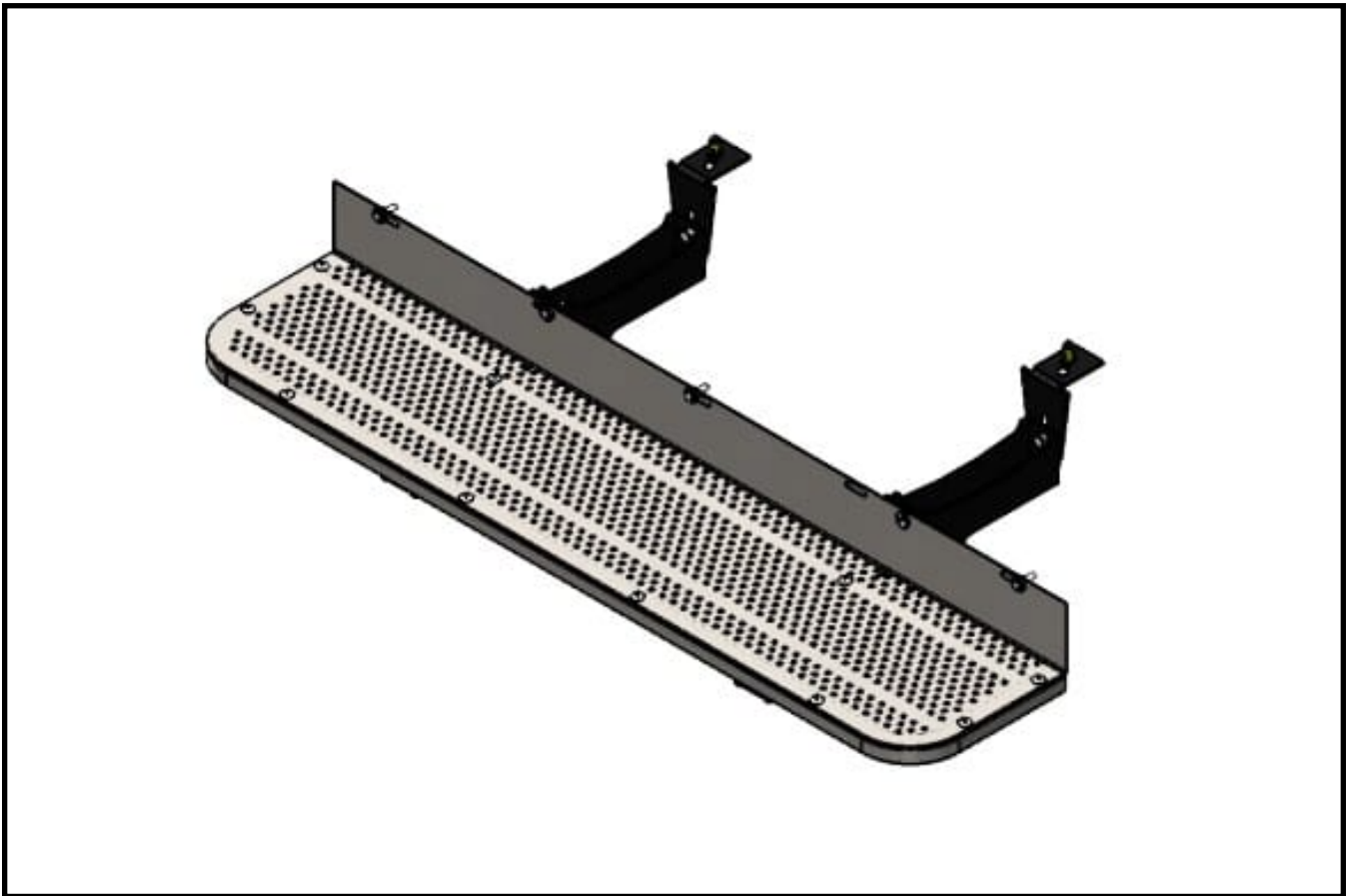
FENTON

InnovateElevate

RAM PROMASTER

Cargo Running Board
Installation

RBAPC000

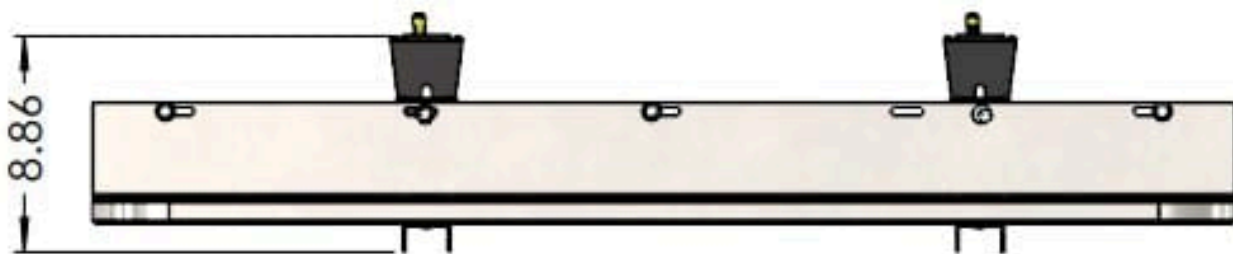
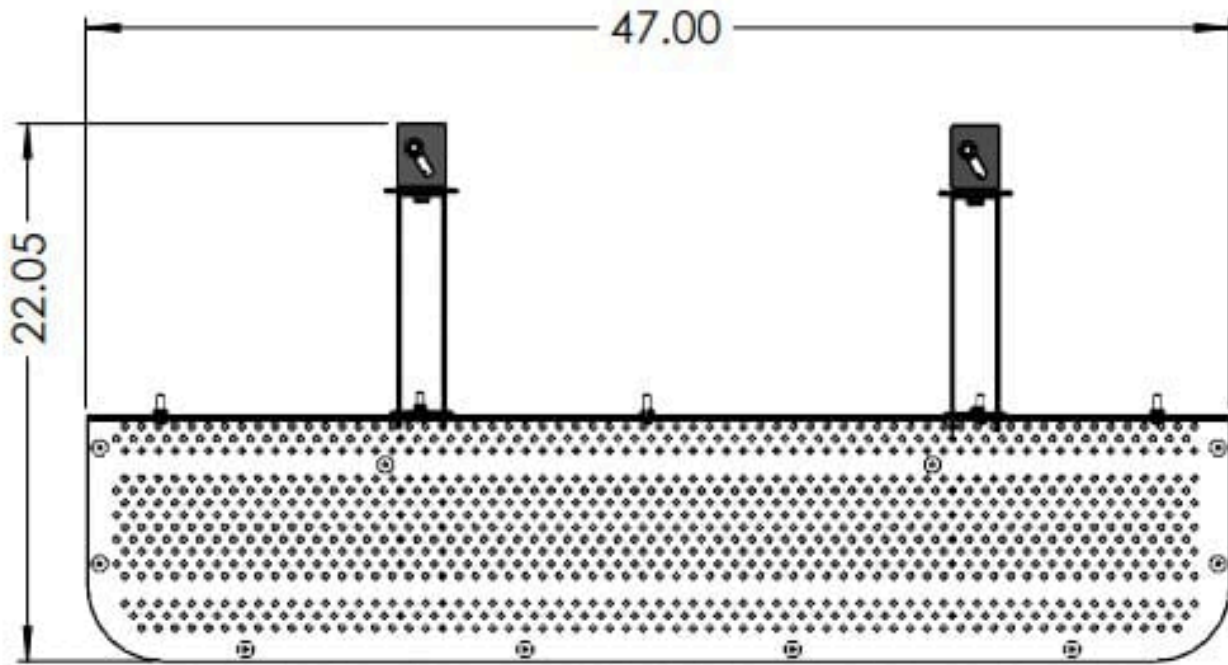


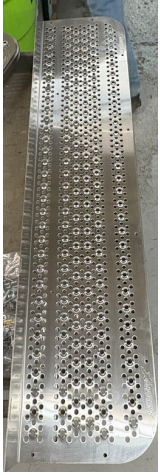
INCLUDED IN THIS KIT:

- (1) ProMaster Cargo Running Board Platform (RBCRP001)
- (1) ProMaster Cargo Running Board Frame Weldment (RBWTC010)
- (2) ProMaster Running Board Mount Weldment (RBWPU010)
- (14) Rivet, S.S. 3/16" Dia. x 1/4" (RVTSS18725)
- (2) Rivet Nut, 3/8"-16 x .805" (RNRF371680)
- (2) ProMaster Running Board Mounting Bracket (RBPPUB20)
- (4) Hex Flange Bolt, 3/8"-16 x 1" (HF3816100Z)
- (2) Hex Flange Nut, 3/8"-16 Serrated (HF3716SRZN)
- (5) Hex Head Bolt 1/4"-20 x 1" SS (HH2520100S)
- (5) 1/4" Flat Washer, SS (FWU250062S)
- (5) Flange Nut, 1/4"-20 (FN2520SRSS)

NEEDED FOR INSTALLATION:

- Air Hydraulic/Manual Rivet Gun
- Utility Knife
- Drill
 - 1/8" (0.25") bit
 - 17/32" bit
- Placement Template (corresponds with the screw holes on vertical back side of platform)
- Marker
- Rust Protectant Spray/Primer
- 11mm wrench
- Under Car Roller (Creeper)
- Impact Driver
 - 7/16" bit
- Air Compressor/Manual Rivet Nut Tool
- Level





1.

Align running board platform with frame weldment, making sure the rivet holes match up along outside edges and rear vertical side of platform does not over hang back of frame weldment.

2.

Insert rivets (4) into rivet holes through platform and into frame, fasten rivets using Rivet Gun.



3.

Carefully, adhere reflective tape along edge of platform, leaving none hanging off the front edge.

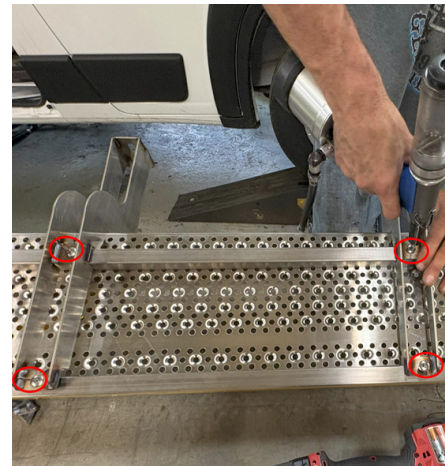


4.

Insert rivets (4) into holes along front of plate and fasten with Rivet Gun.

5.

Flip over and attach two mount weldments onto cross bars of frame weldment using four rivets and rivet gun, pressing mount weldments forward into back of platform.



6.

Using utility knife, cut any excess debris or body filler away from vehicle.



7.

Position template so front edge matches front edge of vehicle and mark holes (3) 10" from front step with marker. Drill on each with 1/4" drill bit.

8.

Spray rust protectant or apply primer into each hole.

9.

Insert Hex Head Bolts into washers.



10.

Fit top edge of platform on back of pinch weld, insert Hex Head Bolt into front hole through vehicle and platform, and hand tighten flange nut on back side.

11.

Repeat (10) for rest of bolts.

12.

Use creeper to access underside of vehicle.



13.

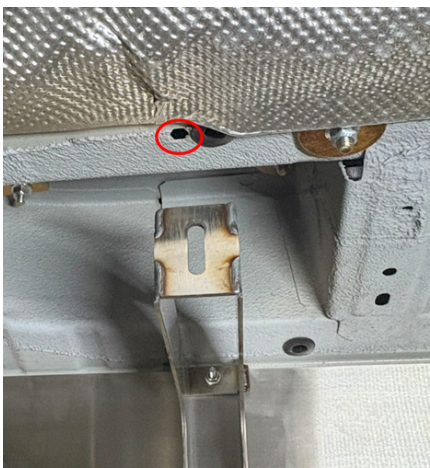
Hold Hex Head Bolt tight with 11m wrench and tighten flange nut on back with 7/16" bit on impact driver.

14.

Using rear "L" shaped mounting bracket as template, mark the underside of the vehicle with marker.

NOTE:

A) Front mounting bracket will attach to pre-existing hole.



15.

Drill relief hole for rivet nut used for the rear mounting bracket with 1/4" drill bit.

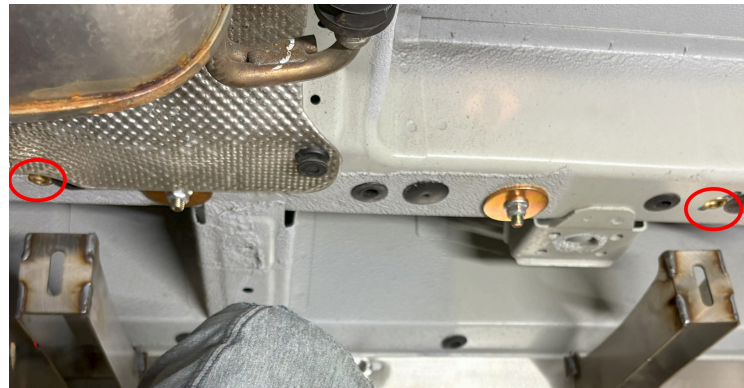


16.

Go over both holes with 17/32" drill bit.

17.

Insert rivet nuts and install with Rivet Nut Tool.



18.

Position mounting brackets again, insert and hand tighten Hex Flange Bolt, using a hex flange nut on the flange bolt connecting to mount weldment.



19.

Use level, balanced on step platform, and tighten Hex Flange Bolts underneath with 7/16" bit on impact driver

FENTON

InnovateElevate

Have Questions?

—

Our team is ready to help!

info@fentonmobility.com • 716-484-7016



Terms & Conditions

<https://www.fentonmobility.com/terms-conditions/>