

FENTON

InnovateElevate

RAM PROMASTER

B-Pillar Grab Bar

Installation

PMBPGB



INCLUDED IN THIS KIT:

- (1) ProMaster B-Pillar Grab Bar Mount (PMBPGB-G02)
- (6) Rivet Nut Insert, 1/4"-20 x 5/8" (RNRF252068)
- (6) Hex Flange Bolt, 1/4"-20 x 5/8" (HF25200625)
- (4) ProMaster B-Pillar Grab Bar Standoff (PMBPGB-P4)
- (1) Universal Grab Bar Weldment (GBUNIV1)
- (4) 3/8"-16 x 1-3/4" Grade 8 Zinc Button Head Screw (BH37161758)
- (4) .750" x .062" x .617" x .509" Nylon Shoulder Washer (FB50025001)

NEEDED FOR INSTALLATION:

- 17mm Hex Socket
- Flathead Screwdriver
- Marker
- Step Cone Drill bits
 - 7/8" (0.875")
 - 1-3/8" (1.375")
- Impact Driver
- Drill
- Drill bits
 - 25/64" (0.391")
 - 19/64" (0.297")
 - 17/64" (0.265")
- Single Step Primer
- Wool Dauber Ball Brush
- Air Compressor/Manual Rivet Nut Tool



1.

Prepare the door frame for installation

NOTE:

A) Move front passenger seat out of the way by leaning and scooting it forward.

B) Remove seatbelt fastenings from plastic cover.

i) airbag cover

ii) cover and bolt at bottom of seatbelt (re-tighten bolt so it isn't lost)

iii) bolt under cover of seatbelt cover

iv) bolt/screw at very bottom of plastic cover (below the ridge).

1) Use a 17mm socket for ii, iii, and iv

v) Fastenings behind airbag over with screws

2.

Continue prepping door frame.

NOTE:

A) Remove plastic covers.

B) Partially remove gasket around side door frame and front passenger door by hand. Remove and handle with care.

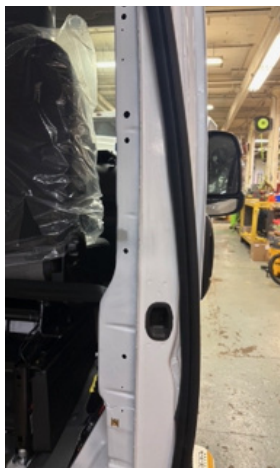
i) only around the front edge on side and back edge of front

ii) do not remove fully



3.

Place Grab Bar Mount, making sure to line up the existing hexagonal holes in the door frame with oval/rectangular holes on the bar mount, marking the four weld nuts with a marker.





4.

Remove Grab Bar mount and drill into each previously marked hole with a 7/8" step cone drill bit for relief/clearance hole for weld nuts on weldment.

5.

Go back over all holes made with a 1-3/8" step cone drill bit, if needed, smooth over edges of hole with 7/8" step cone drill bit.



6.

Paint around edges of freshly drilled hole with a single step primer and a wool dauber ball brush.



7.

Line up the bar mount again, this time blacking out the rest of the oval/rectangular holes that the hexagonal holes match with (4 places).

8.

Drill in the center of each previously marked hole with a 17/64 (0.265") drill bit.

9.

Go over each hole again with a 19/64 (0.297") drill bit.



10.

Drill in each hole again with 25/64 (0.391") drill bit, ensuring not to blowout/oversize the holes.

11.

Install the rivet nut inserts into each of the new holes using the Air Compressor Rivet Nut Tool.



12.

Place Grab Bar Mount in proper position and insert Hex Flange Bolt into each hole, starting all hardware loosely first.



13.

Once all are placed, tighten.

14.

Loosely replace the plastic cover and mark where the holes made with the step cone drill bit are underneath the plastic cover.



15.

Take the plastic cover back off to fully drill through without causing damage to anything underneath.





16.

Redrill the holes into the plastic cover with the two different sizes of step drill bits, being careful to make sure it is a snug fit for the Grab Bar Standoff (the hole should only be 1.25").

17.

Replace the plastic cover, the the seatbelt, and airbag fixtures unhooked in the prep.



18.

Replace gasket around door frames.



19.

Loosely place bottom plastic cover on with provided screws and redrill with the 1-3/8" step cone drill bit. Re-drill the hole that was partially covered by the bottom cover, making sure to match hole underneath to ensure snug fit.

20.

Add Grab Bar Standoffs in each hole made with the step cone drill bit.



21.

Add silicon washers to Grade 8 Zinc Screws and place the Grab Bar weldment in proper position, fastening the zinc screws by hand.

22.

Tighten with drill.

FENTON

InnovateElevate

Have Questions?

—

Our team is ready to help!

info@fentonmobility.com • 716-484-7016



Terms & Conditions

<https://www.fentonmobility.com/terms-conditions/>