

FENTON

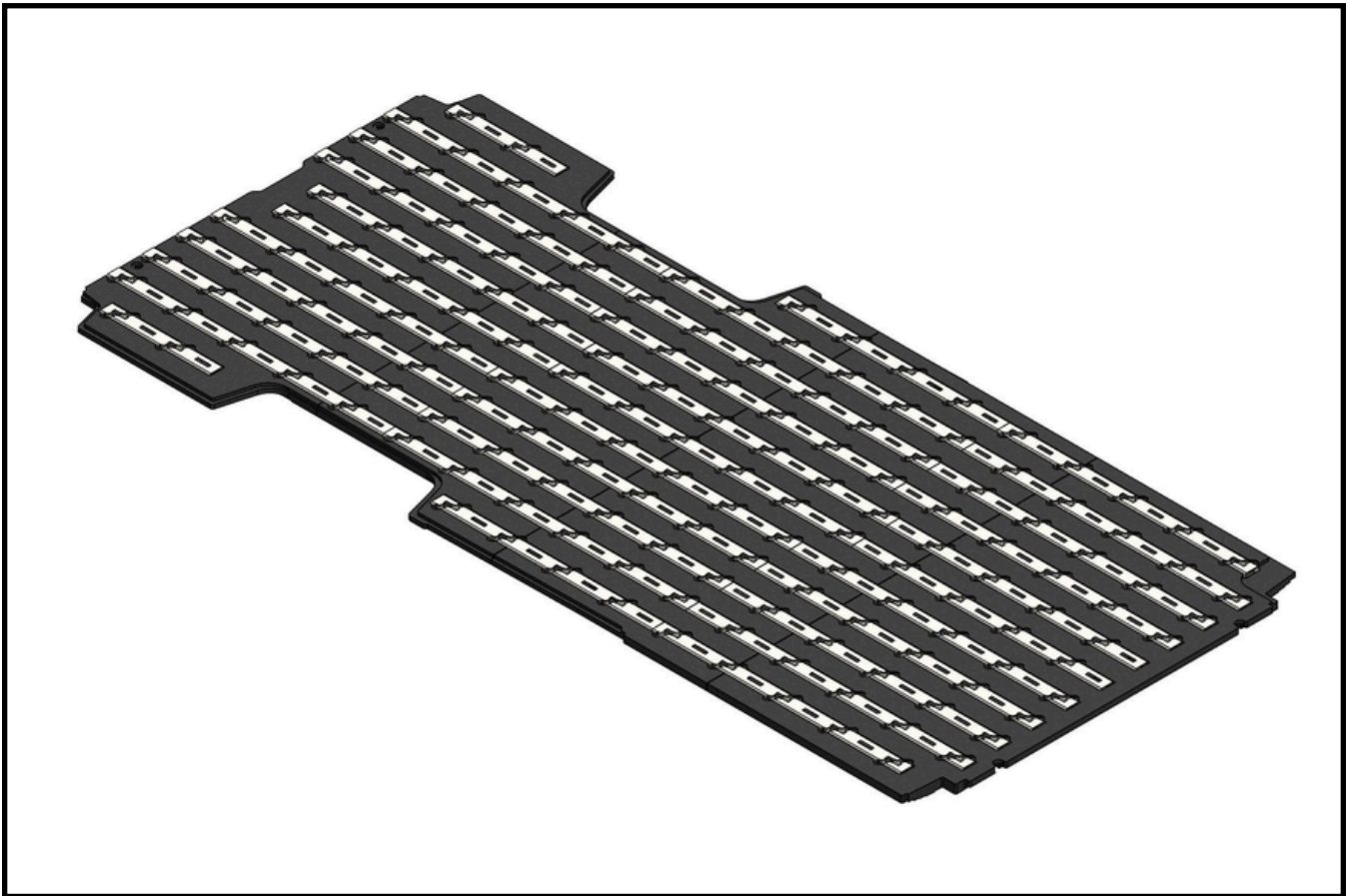
InnovateElevate

RAM PROMASTER

AbiliTrax Full Floor Track
System Installation

AAP60000

For use with Fenton's custom ProMaster Drill Template (AAP140DT)

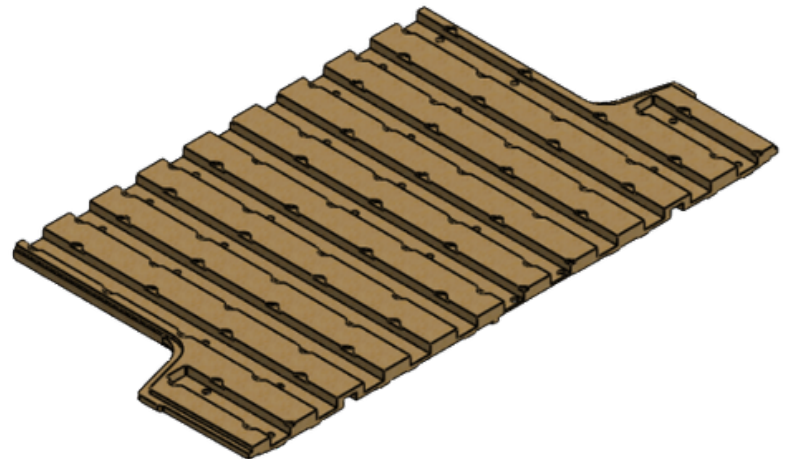
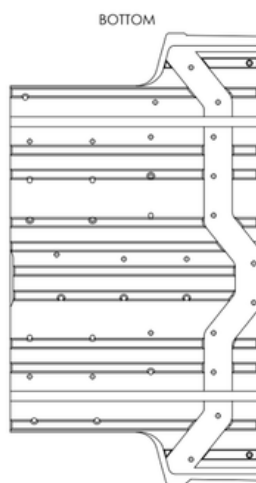
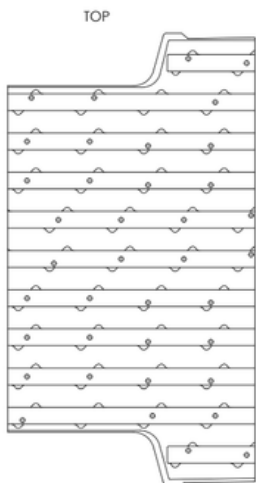
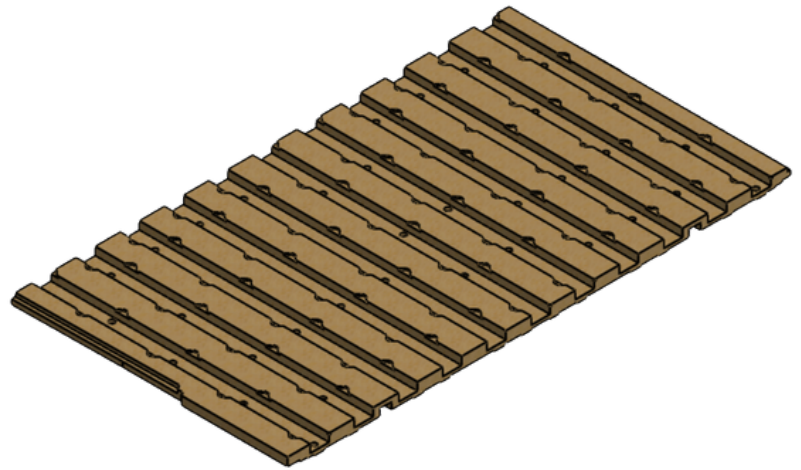
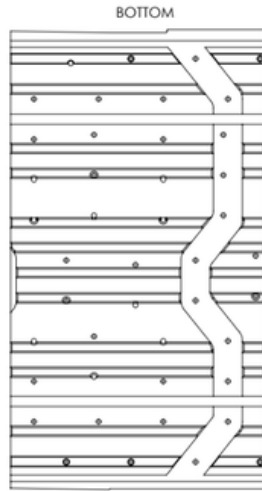
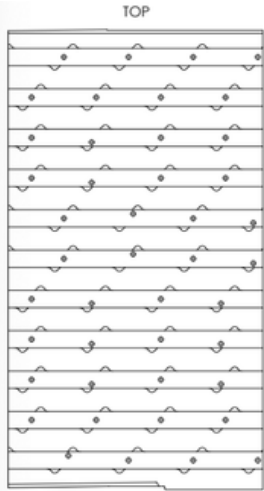
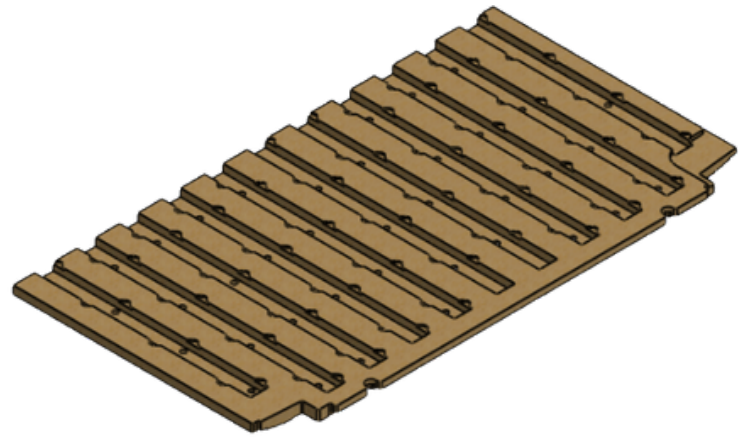
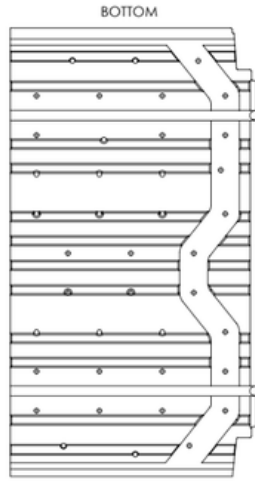
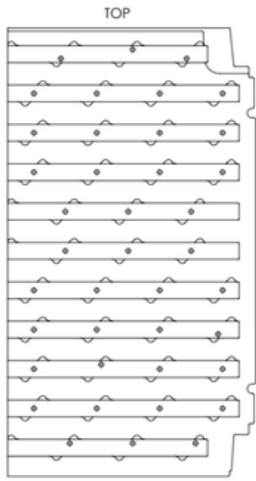


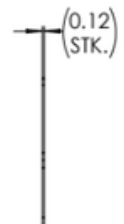
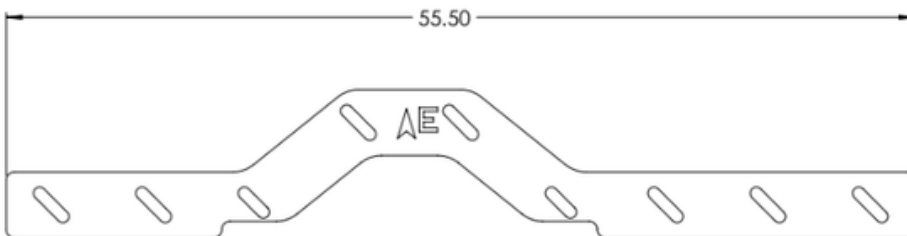
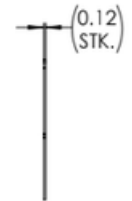
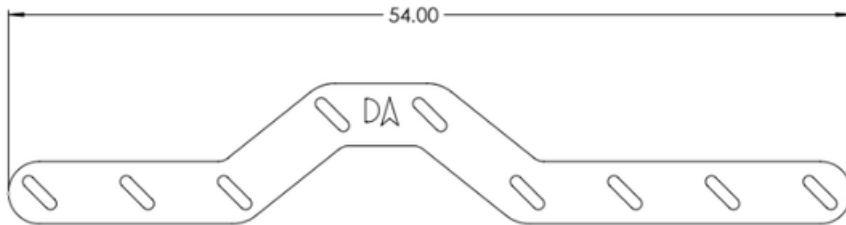
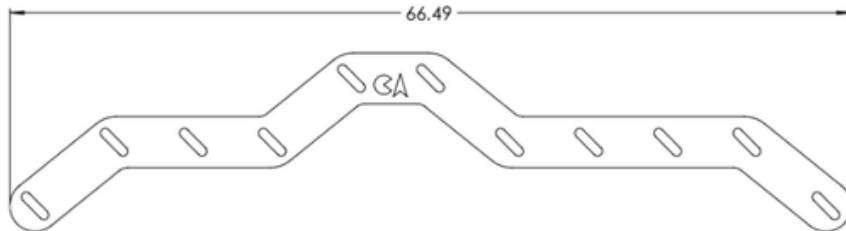
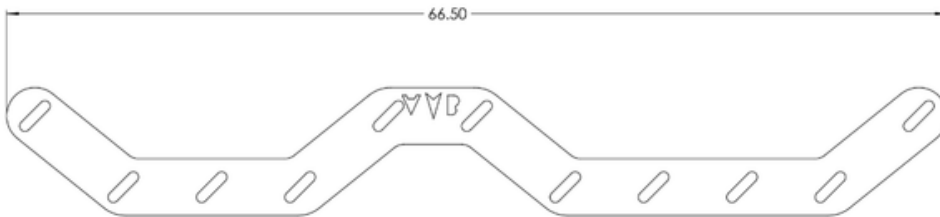
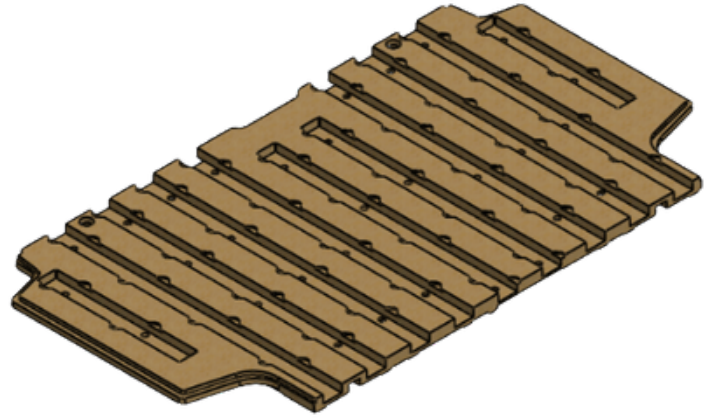
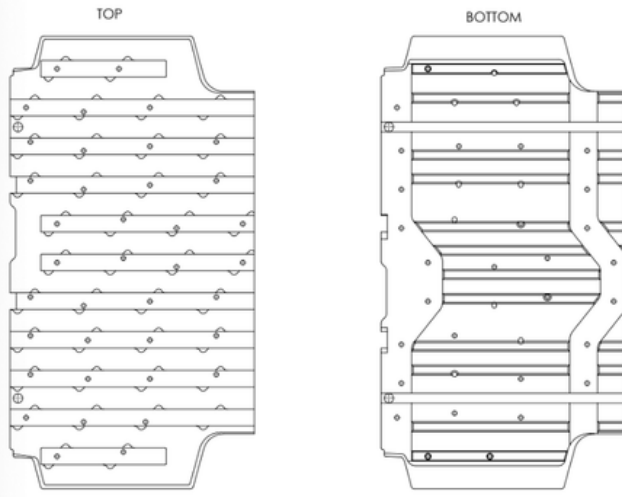
INCLUDED IN THIS KIT:

- (1) Front Floor (AAP60000-P1)
- (1) Front Middle Floor (AAP60000-P2)
- (1) Rear Middle Floor (AAP60000-P3)
- (1) Rear Floor (AAP60000-P4)
- (2) ProMaster 160 Cross Plate AB (AAP60000-CPAB)
- (1) ProMaster 160 Cross Plate C (AAP60000-CP-C)
- (1) ProMaster 160 Cross Plate D (AAP60000-CP-D)
- (1) ProMaster 160 Cross Plate E (AAP60000-CP-E)
- (1) ProMaster 160 Laser Cut Rail Kit (AAP60000LRK)
- (18) 1/4"-20 x 5/8" Zinc Finish Case Hardened Hex Serrated Flange Bolt (HF25200625)
- (18) 1/4"-20 Zinc Finish Case Hardened Serrated Flange Nut (FN2520SRZN)
- (110) 3/8"- 16 x 2" Hex Head Bolt (HH37162008)
- (3) 3/8" - 16 x 4.5" Hex Head Bolt (HH37164508)
- (13) 3/8" - 16 x 5" Hex Head Bolt (HH37165008)
- (20) 3/8" - 16 x 6" Hex Head Bolt (HH37166008)
- (6) 3/8" - 16 x 7" Hex Head Bolt (HH37167008)
- (154) 3/4" x 2.000" Flat Washer OD (FWB3720012)
- (154) 3/8 Flat Washer (FW03750628)
- (154) 3/8"-16 Flange Nut Top Lock G8 (FN3716TLK8)

NEEDED FOR INSTALLATION:

- Impact Driver
 - 9/16" socket
 - Philips head
 - T40 Torx bit
 - 7/32" bit
- ProMaster OEM Floor Tin Wood Template
- Floor Bolt Templates
- (2) Plastic Shims
- (12) #8-18 x 1-5/8" Phillips Drive Self-Drilling Screw (MTH818162SD)
- Drill
 - 12" long 7/16" drill bit
- Vacuum/Broom/Blow Gun
- Rust protectant spray
- Awl Pick
- (2) metal rail positioning plates
- (22) Vise-Grip Locking Pliers
- Bolt sizing and placement guide
- 30ft/lb. Torque stick/wench
 - Air pressurized impact wrench for torque stick
- 9/16" wrench







1.

Prepare area/vehicle for installation

NOTE:

- A) Place vehicle on lift/ramps.
- B) Remove spare tire so it isn't damaged by the drill.
 - i) Remove bolt behind rear tire with spare tire kit.
 - ii) Pull spare tire out from under vehicle.
 - iii) Retighten bolt to prevent loss of hardware.

2.

Remove all obstructions such as plastic covers and/or tie-down anchors from floor and lower B-Pillar area.

NOTE:

Starting with the cover,

- A) Remove screws (3 on rear facing side and 2 on front facing side) with Phillips head bit on impact driver.
- B) Pull plastic covers off their white plastic clips and store on dashboard of corresponding sides to not lose any parts.

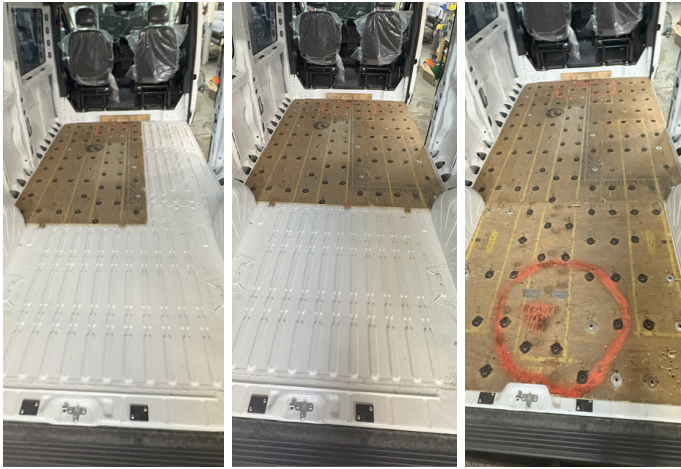


3.

Continue with the removal of obstructions by removing the tie-downs and place template block.

NOTE:

- A) Use a T40 Torx Bit on an impact to remove the anchors.
- B) Place template block so arrow on top face matches with preexisting center front bolt hole in van.



4.

Place floor bolt templates on floor (largest first, then passenger side, then rear).

NOTE:

A) Fit interlocking pieces together like puzzle.

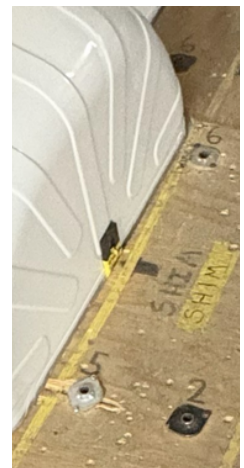
5.

Continue checking floor template

NOTE:

A) Ensure arrow on driver side panel matches line on block template.

B) Insert shims on either side of wheel well in space marked "SHIM" on wooden templates so template is centered.



6.

Secure templates to van floor with self-drilling screws and Phillips head bit on impact driver.



7.

Use drill and 7/16" bit to drill holes through brackets according to depth labeled near hole in template.

NOTE:

A) Be aware of obstructions close to underside of floor such as muffler.

B) Be sure end of drill is clean. Friction heat can cause the undercoating to melt and stick to the bit, prohibiting drilling.

8.

Remove shims and floor bolt templates in reverse order installed.

NOTE:

A) Rear first, then passenger, finally driver.



9.

Vacuum, sweep, and/or blow out debris.



10.

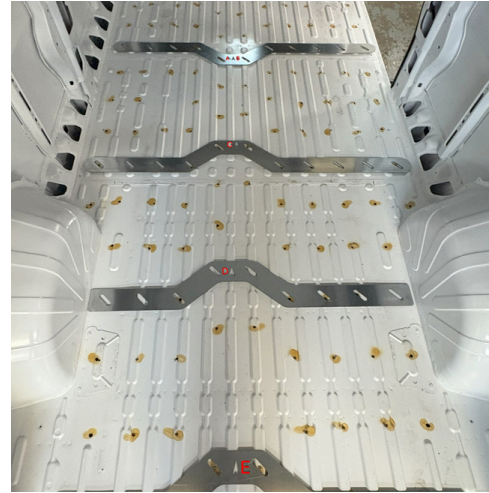
Apply Rust Protectant Spray to each hole drilled.

11.

Place plates labeled A/B-E (rearward alphabetically).

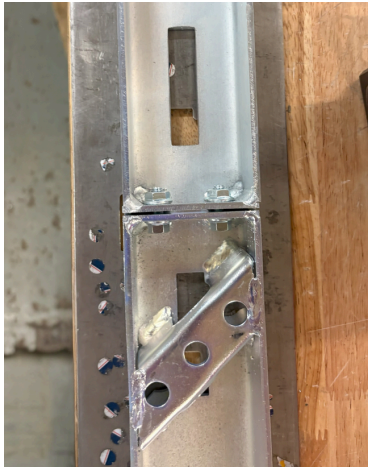
NOTE:

A) Arrows must point to the front of the van and be to the right of the letter A when upright.



12.

Place floor plates (4) and confirm cross plate alignment by inserting awl pick into floor panel holes over cross plates.



13.

Connect rail weldments with 1/4"-20 x 5/8" Hex Serrated Flange Bolt and 1/4"-20 Serrated Flange Nut with 7/16" bit on impact driver with rail size according to rail kit blue print.

NOTE:

- A)** Sizing numbers correspond to number of notches on side of rail plate
- B)** Insert bolt from "X" side, nut from "-" side, and tighten from "-" side.
- C)** Be sure rails match perfectly even and there is no step or misalignment.

14.

Insert longest rail weldment assemblies (7) into vehicle first, then middle rail weldment assemblies (2), and finally shortest outer weldments (2).

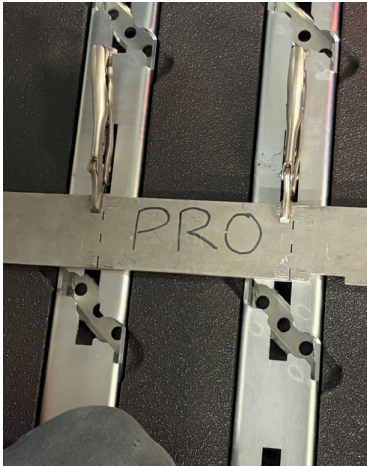


15.

Place metal positioning plates on either end of rail weldment assemblies.

NOTE:

- A)** Dotted line on plate should be in line with passenger side interior of each slot.
- B)** Bottom edge of plate should align with top edge of slot.
 - i)** Makes sure the rails are square and even left to right and front to back. Critical this is done correct.



16.

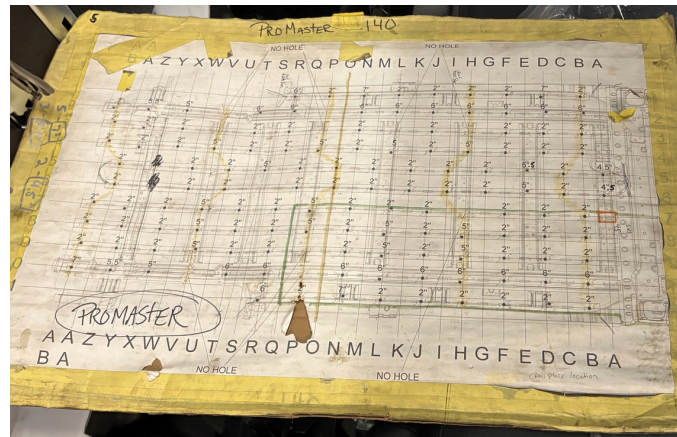
Secure plates with Vise-Grips Locking Pliers (11 each).

17.

Using bolt chart, insert each bolt into the drilled hole through each "X" hole and flat washer.

NOTE:

- A) If bolt does not go fully in,
 - i) Pinch and drop repeatedly.
 - ii) Wiggle hole with awl pick to realign.
 - iii) Drill hole again with 7/16" bit on regular drill, but only as a last resort.



18.

Under the vehicle, place a 2" OD flat washer and flange nut on underside of each bolt. If full 2" washer doesn't fit flush with underside, use 1/2 washer.

NOTE:

- A) Hand tighten as much as possible. Avoids nut and washers loosening and falling off during tightening.
- B) May need to bend away heat shields to access some bolts or use hammer to flatten heat shield to place washer on top.
- C) Will need to remove bolts holding hangers of muffler and exhaust to access bolts underneath.



19.

Hold nut steady with 9/16" wrench and torque all bolts to 30ft/lbs max.

NOTE:

A) Only run torque for about 4 seconds

B) Could create damage if too tight, but could fall off if too loose. Washer should be slightly indented into undercarriage.

20.

Check rail height as rails must be flush or slightly above floor surface.



21.

Remove positioning templates.



22.

Stick serial number vinyl on to tag, and secure into front driver side floor corner with included screws in kit and Phillips head bit on impact driver.

FENTON

InnovateElevate

Have Questions?

—

Our team is ready to help!

info@fentonmobility.com • 716-484-7016



Terms & Conditions

<https://www.fentonmobility.com/terms-conditions/>