



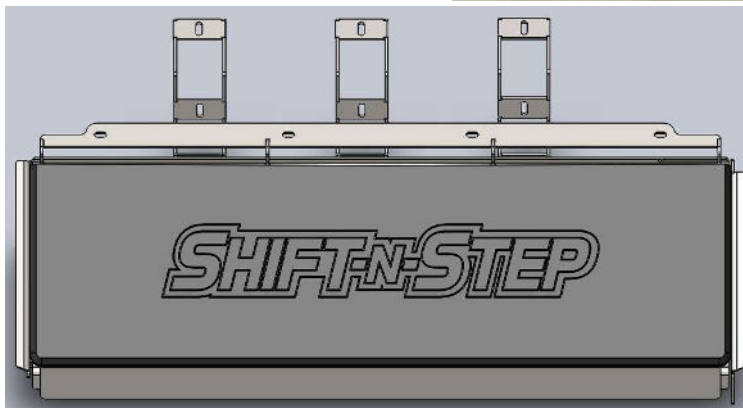
SHIFT-N-STEP



TRANSIT

SHIFT-N-STEP BUS STEP INSTALLATION INSTRUCTIONS

(P/N TBSA0010)





SHIFT-N-STEP

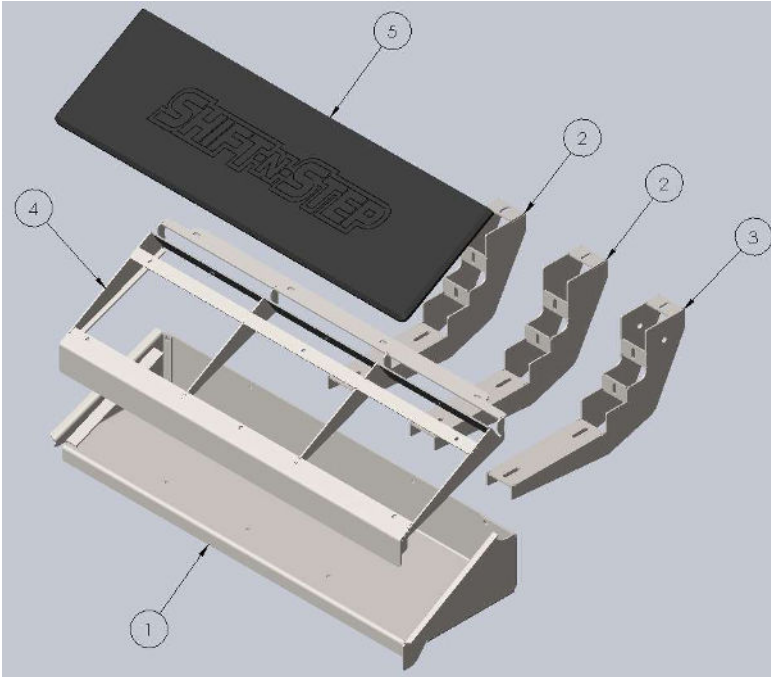
Table of Contents

- Exploded Parts View
- Parts and Hardware List
- Tools
- Warnings and Cautions
- Preparation
- Drilling
- Hardware Installation
- Final Procedures



SHIFT-N-STEP

(TBSA0010) EXPLODED PARTS VIEW



TBSA0010 (TRANSIT BUS STEP) Parts and Hardware List

ITEM NO.	PART NUMBER	DESCRIPTION	QTY.
1	TBSWT010	STEP BODY	1
2	TBSWB010	STANDARD STEP BRACKET	2
3	TBSWB110	FRONT STEP BRACKET	1
4	TBSWL010	DOOR FRAME BRACKET	1
5	TBSPL100	POLY STEP COVER	1
6		1/4" FLAT WASHER	5
7		1/4"-20 FLANGE LOCK NUT	22
8		1/4"-20 X 4" HEX DRIVE BUTTON SOCKET CAP SCREW	5
9		1/4"-20 X 3/4" HEX DRIVE BUTTON SOCKET CAP SCREW	6
10		1/4"-20 .027-.165 Large Flange Ribbed Nutsert Steel	7
11		1/4"-20 x 1" Hex Head Serrated Flange Bolt	13
12		#8 x 5/8 Pan Phillips	6
13		WEATHER SEAL	50"



SHIFT-N-STEP

Recommended Tools List:

- Typical shop tools
- 7/16" 3/8 drive sockets or wrenches
- 1/16", 1/8", 5/16", and 25/64" Drill bits
- Masking Tape
- Marker
- Tape measurer
- Screwdrivers
- Nutsert insert tool
- Scissors
- Alcohol prep for Weather Stripping
- Panel Removal Tools
- Spot Primer

Warnings and Cautions

Warning

While every effort has been made to ensure the fitment of Bus Step, it is up to the installer to check for under floor obstructions (i.e. fuel tanks, fuel lines, brake lines, modules, wiring) and any other item that can be damaged by the installation of the flooring system. Clearances are the responsibility of the installer.

CAUTION

Drill ONLY at indicated locations. Use of a stop collar on drill bits is recommended)

Do not over tighten hardware. Do not under tighten hardware.



SHIFT-N-STEP

Preparation:

Begin by removing rocker panel cladding. With panel removal tools and store to side.

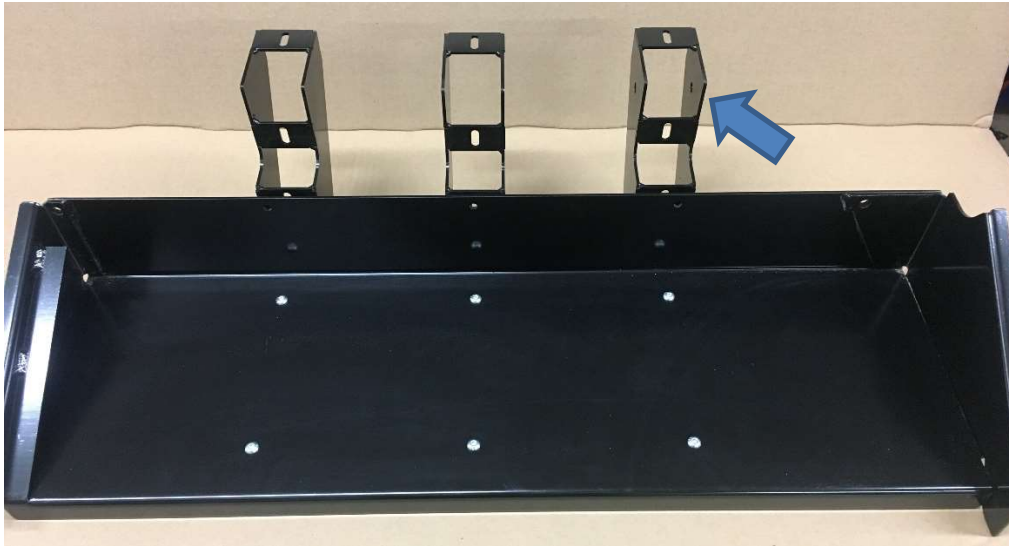


Step will use (5) existing factory holes as shown in photo. Drill out to 5/16" through rocker panel true and square at shown locations.

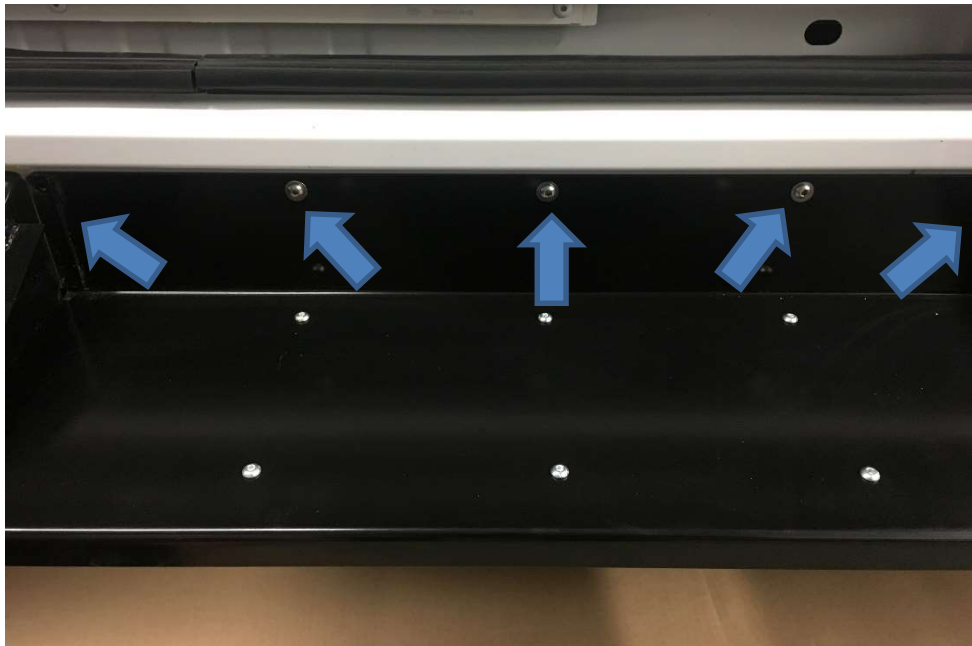


SHIFT-N-STEP

Loose assemble step brackets to step body using (6) ¼"-20 x ¾" hex drive button head cap screws and (6) lock nut. (Note front bracket has 2 side holes not on standard brackets, see arrow)



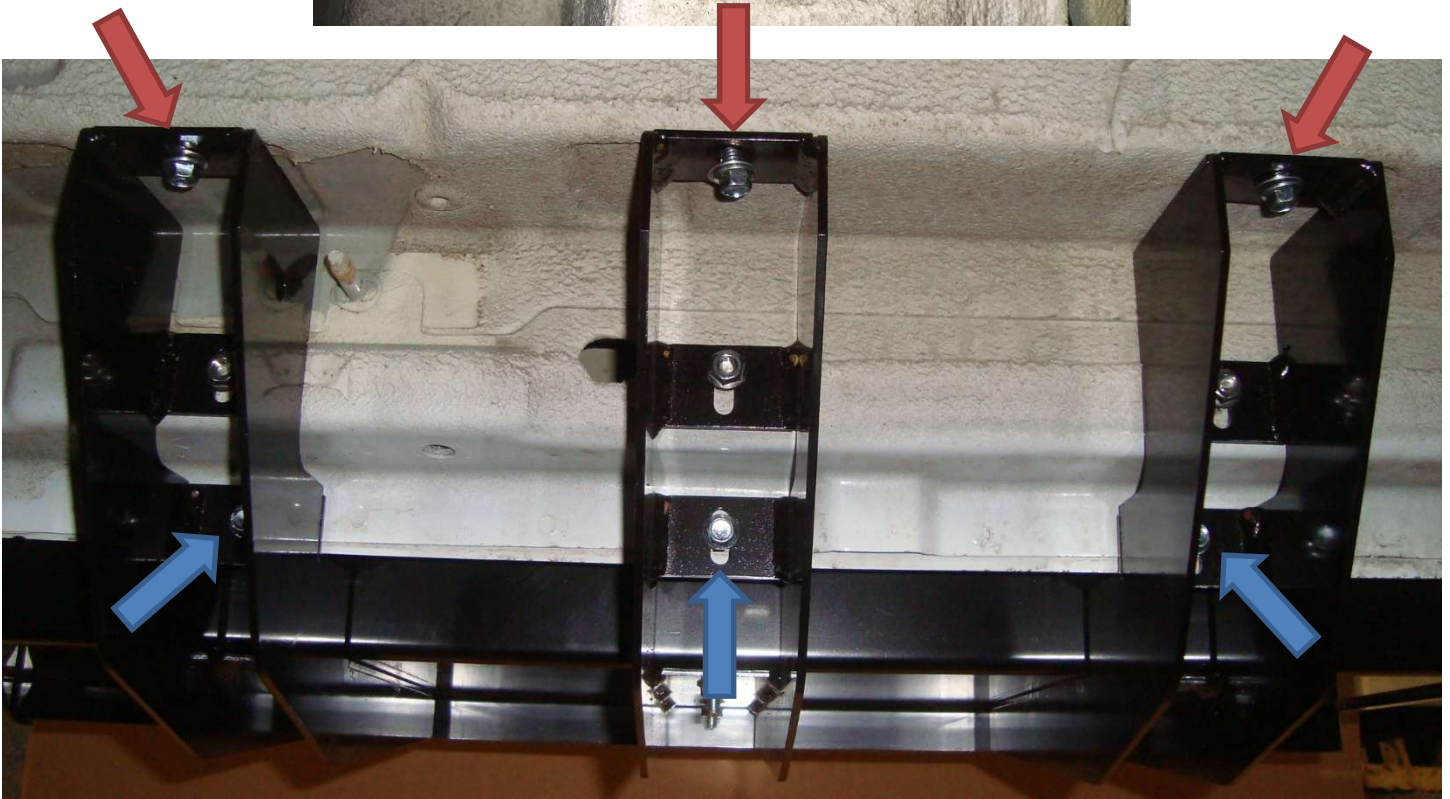
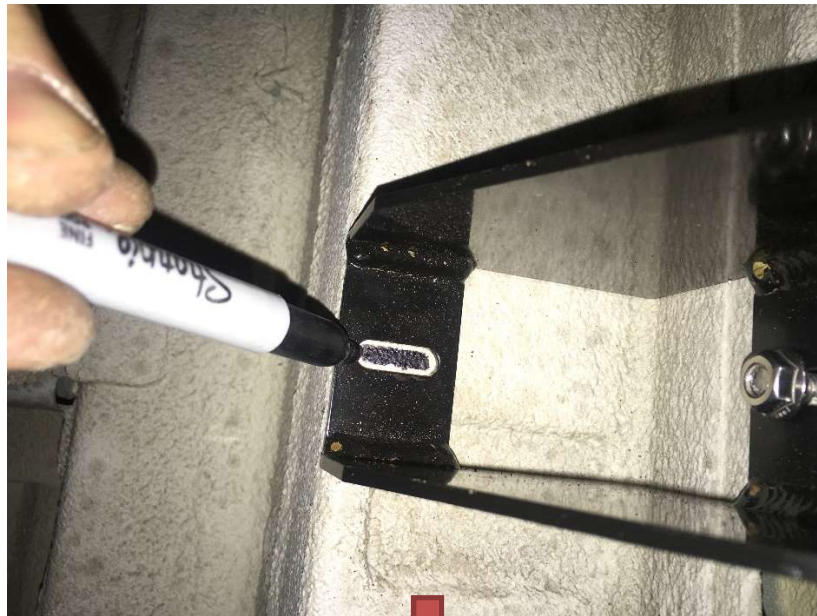
Once brackets are attached to step body dry fit to rocker panel with (5) ¼"-20 x 4" hex drive button head cap screws, (5) flat washers, and (5) flange lock nut.





SHIFT-N-STEP

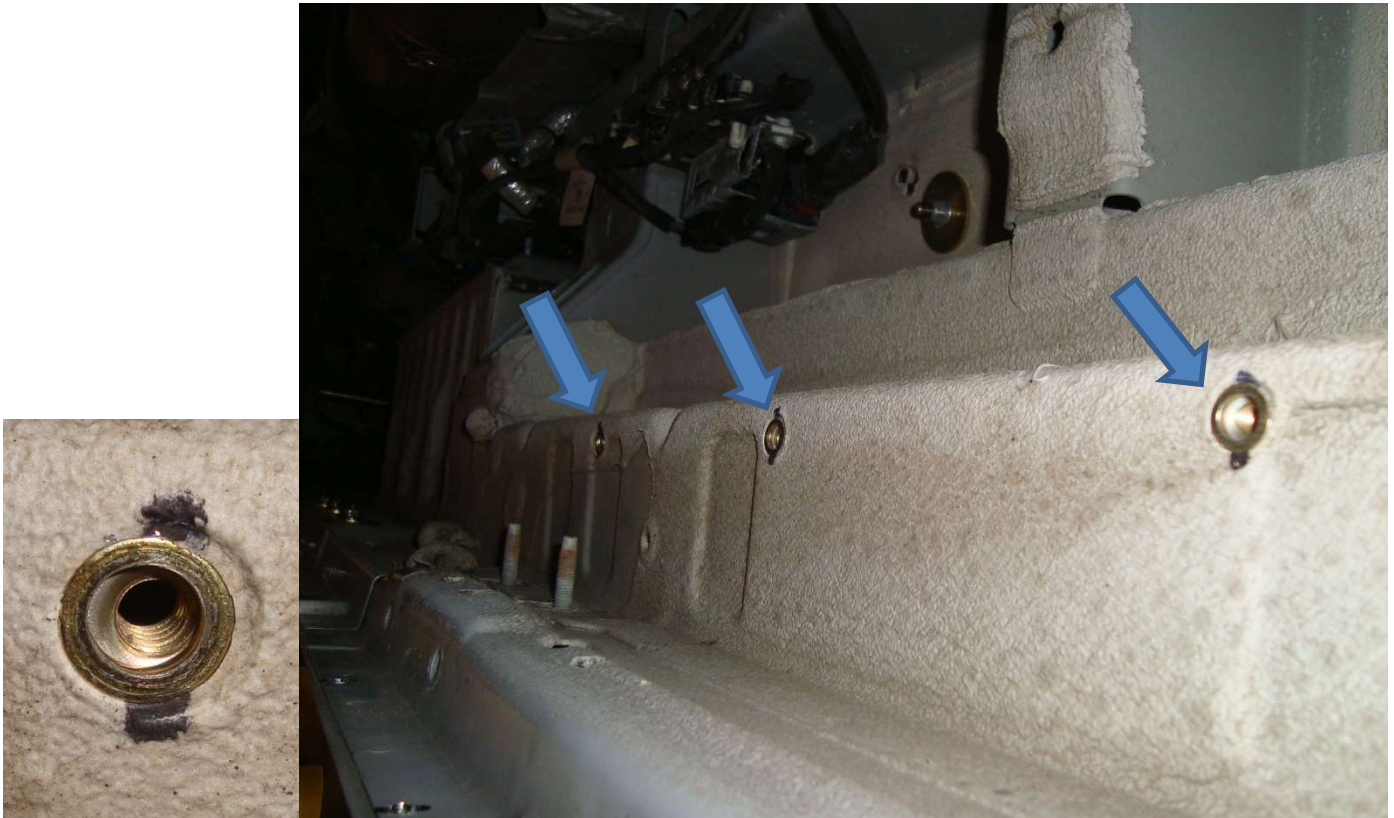
Once positioned on rocker panel from bottom side mark (6) slots remove step body and drill on center of marks using 1/8" pilot drill. Finish drill as shown in photo below. **Red** with 25/64" for nutserts, and **blue** with 5/16" for bolt.





SHIFT-N-STEP

Insert (3) nutserts in 25/64" holes and secure with nutsert tool per manufacture recommendations.





SHIFT-N-STEP

Replace step body and secure all bolts.





SHIFT-N-STEP

Prep door for poly step cover installation.

Tape base of door and mark 2" from door edge to locate start of door frame bracket as shown in photo below.



Position door frame bracket and mark slots on underside of door as shown





SHIFT-N-STEP

Pilot drill with 1/8" drill in center of slot and finish with 25/64" for nutserts. Insert (4) nutserts in 25/64" holes and secure with nutsert tool per manufacture recommendations.





SHIFT-N-STEP

Dry fit with (2) ¼-20x1" bolts on outer bottom slots and position door frame bracket 2" from edge of door. Mark slots on taped door face. Drill in center of slots with 1/8" pilot and finish with 5/8" for bolt.





SHIFT-N-STEP

Install Poly Step Cover to door frame bracket. Place cover with bottom up on work area with door frame bracket centered on cover.



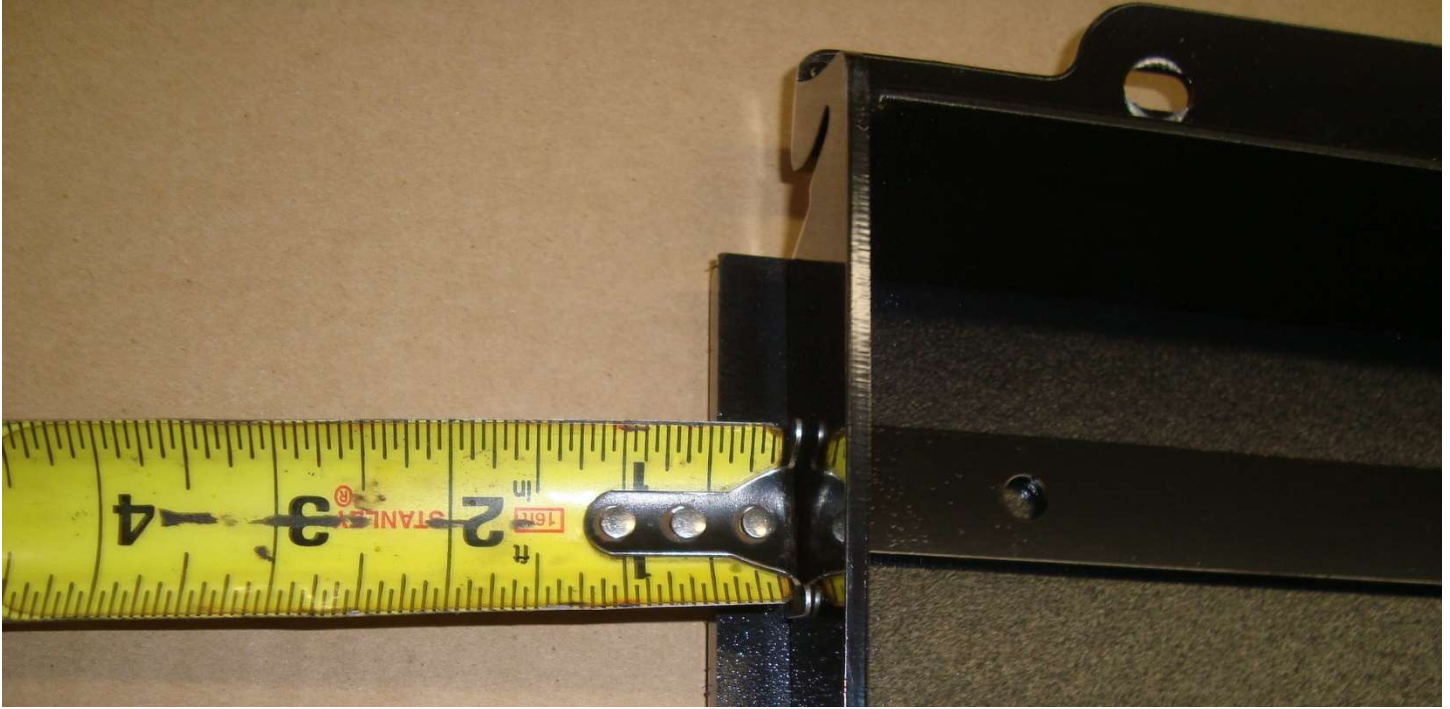
Double check orientation by insuring square corner is toward door attachment holes as shown below, and maintain the back cover edge is flush to door plate as shown below.





SHIFT-N-STEP

Position frame to have $\frac{1}{2}$ " reveal to edge of cover as shown on sides.



Mark (6) holes on cover bottom for drill locations.





SHIFT-N-STEP

Drill pilot hole in center of marks with 1/16" drill. Be sure to use stand off to restrict drill depth to no more than 1/4"



Hand tighten screws to cover to avoid stripping.





SHIFT-N-STEP

Remove tape, position door frame bracket, install and tighten (7) bolts to the door face and bottom in shown direction.





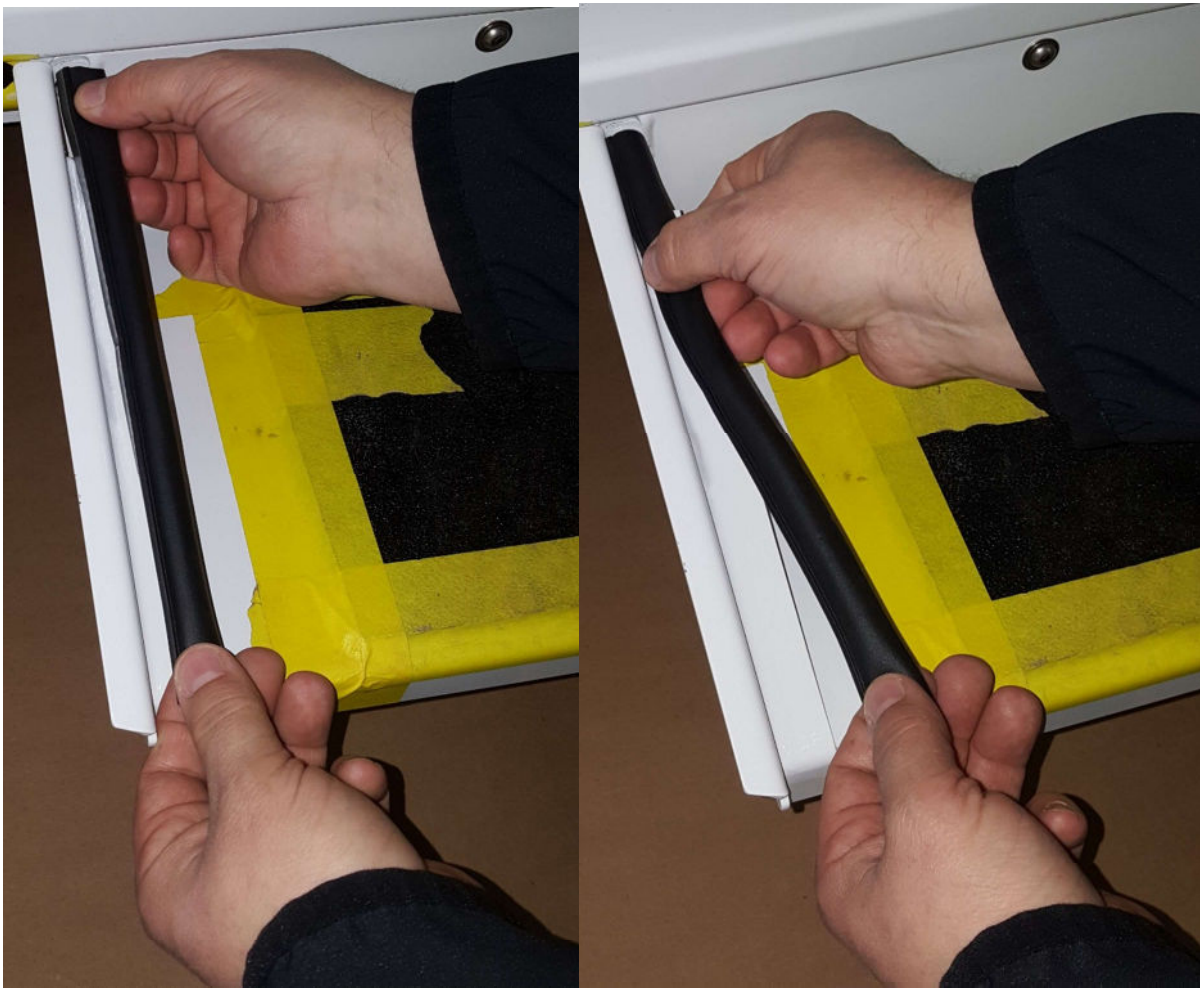
SHIFT-N-STEP

Install weather stripping

Cut 9-1/2" piece for step rear, 10-1/4" for step front, and 29" for cover plate guard.

Clean and prep with alcohol to insure seal sticks properly.

Step rear seal (9-1/2") length



Attach to step wall as shown and twist to attach to seal flange.



SHIFT-N-STEP

Clean and prep with alcohol to insure seal sticks properly.

Step front seal (10") length



Attach to step wall as shown.



SHIFT-N-STEP

Clean and prep with alcohol to insure seal sticks properly.

Cover plate guard seal (29") length



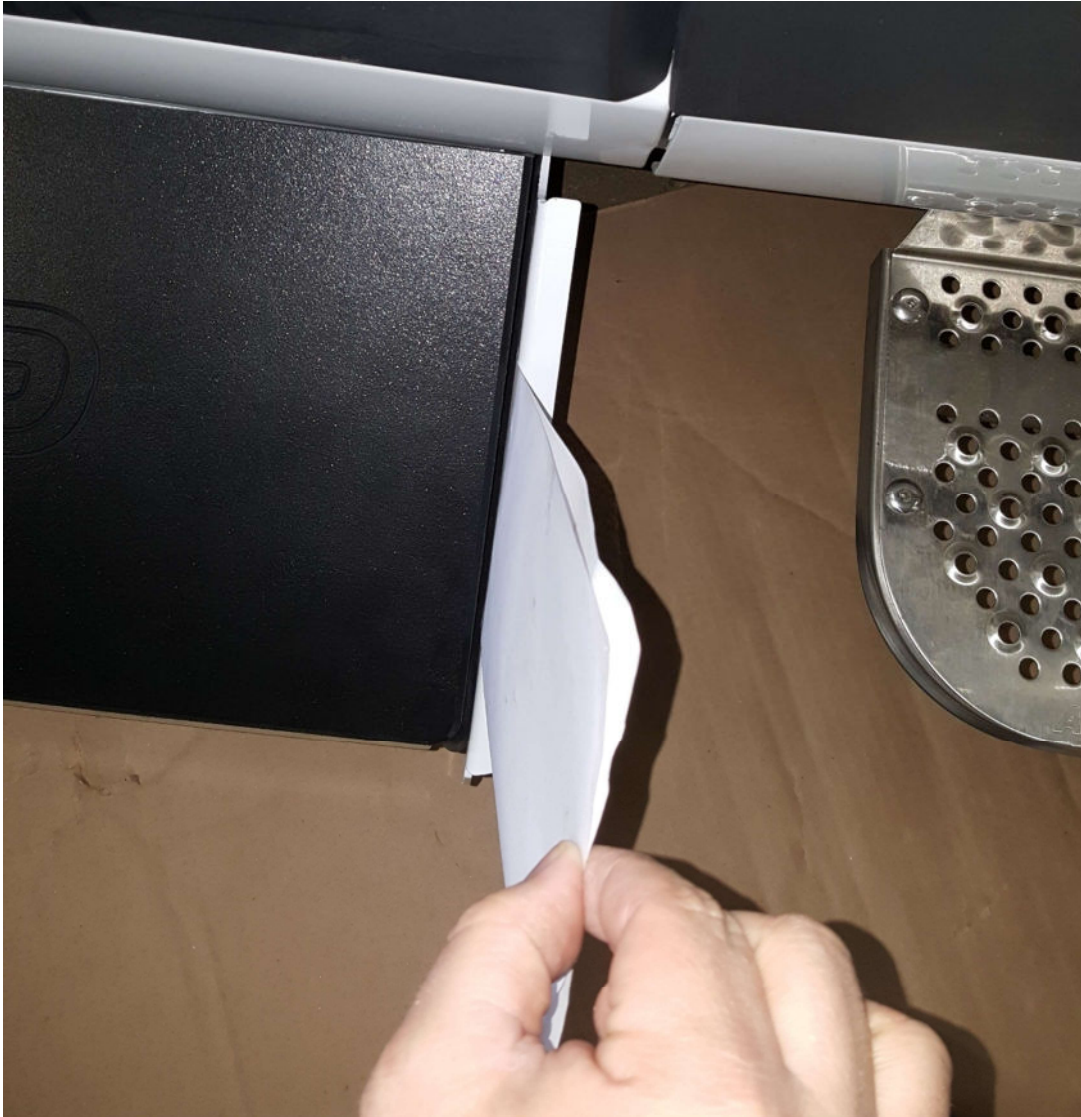


SHIFT-N-STEP

Final Procedures

Check and insure all fasteners are tight and secure

Check weather stripping is not over compressed in closed position. See photo.



Folded paper should have some drag but not tear.